



WELDING EQUIPMENTS
ATOM

AWE-16A

Cold Welding Machine

Casting Defect Welding Machine

The new AWE-16A

One machine solves all defect problems

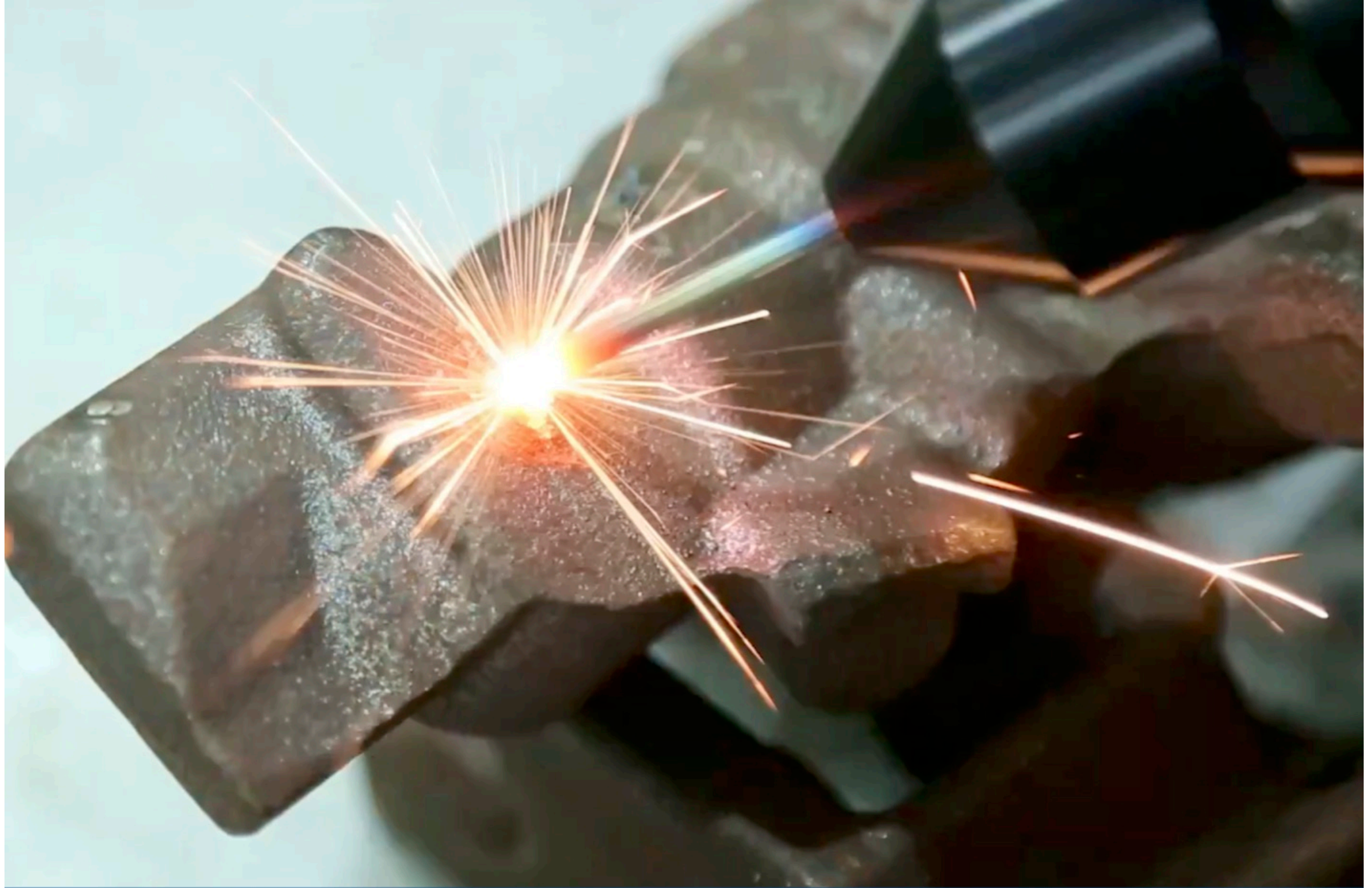
FULL DIGITAL CONTROL | 2400W POWER | IMPROVED WELDING GUN



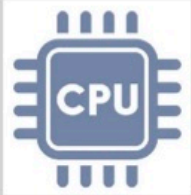


Why need an AWE-16A ?

Blow hole/sand drop/shrinkage are common defects for castings, defect casting percentage normally around 10% to 30% for a foundry. Those rejected castings will cause a big lost if they remelt them or sell at a cheaper price. The fact is that most of the defect castings may only have few defect holes and on not so important locations. Then AWE-16A cold welder will just be the right tool to repair them.



A professional tool for casting defects repair



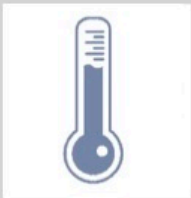
FULL DIGITAL CONTROL

Makes the power output more accurate



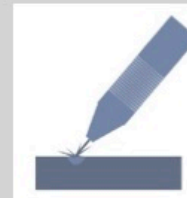
2400W POWER

Bigger power
More possibility



DUAL TEMPERATURE SENSOR

More intelligent machine temperature control



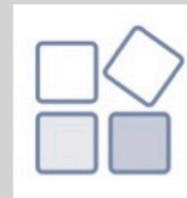
NEW WELDING GUN SYSTEM

Longer-lasting use and faster installation



LOW TEMPERATURE WELDING

Small heat input
no annealing, no deformation



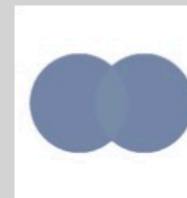
MULTIPLE USES

Casting repair, mould repair
Tungsten coating, etc



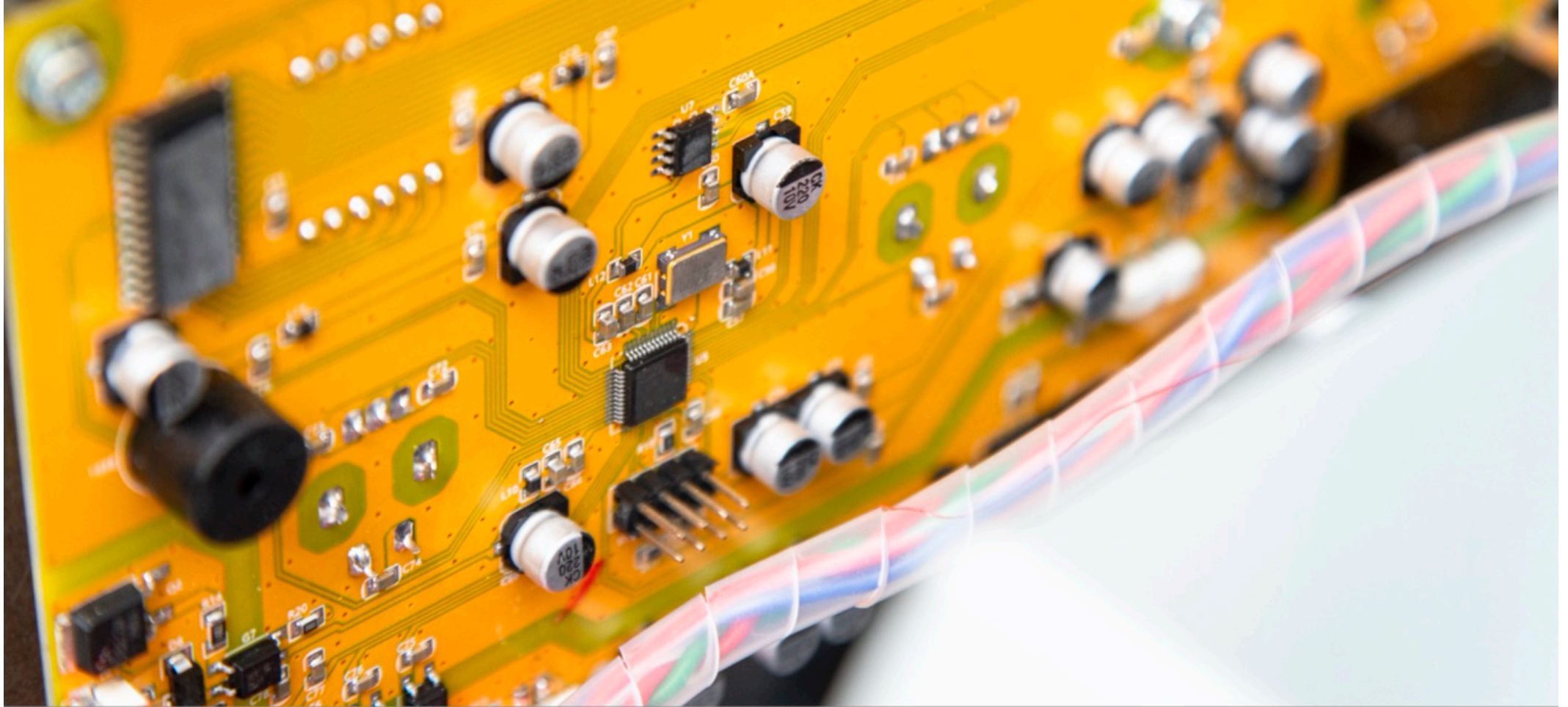
WITH OR WITHOUT ARGON GAS

Argon gas is not always necessary, save cost



SMALL COLOR DIFFERENCE

Metallurgical combination
small color difference



**NOW THE
POWER
OUTPUT IS
MORE
ACCURATE**

The new AWE-16A adopt full digital control, you can very easily and accurately adjust the machine power output.

All industrial electronic components make the machine more durable and stable.

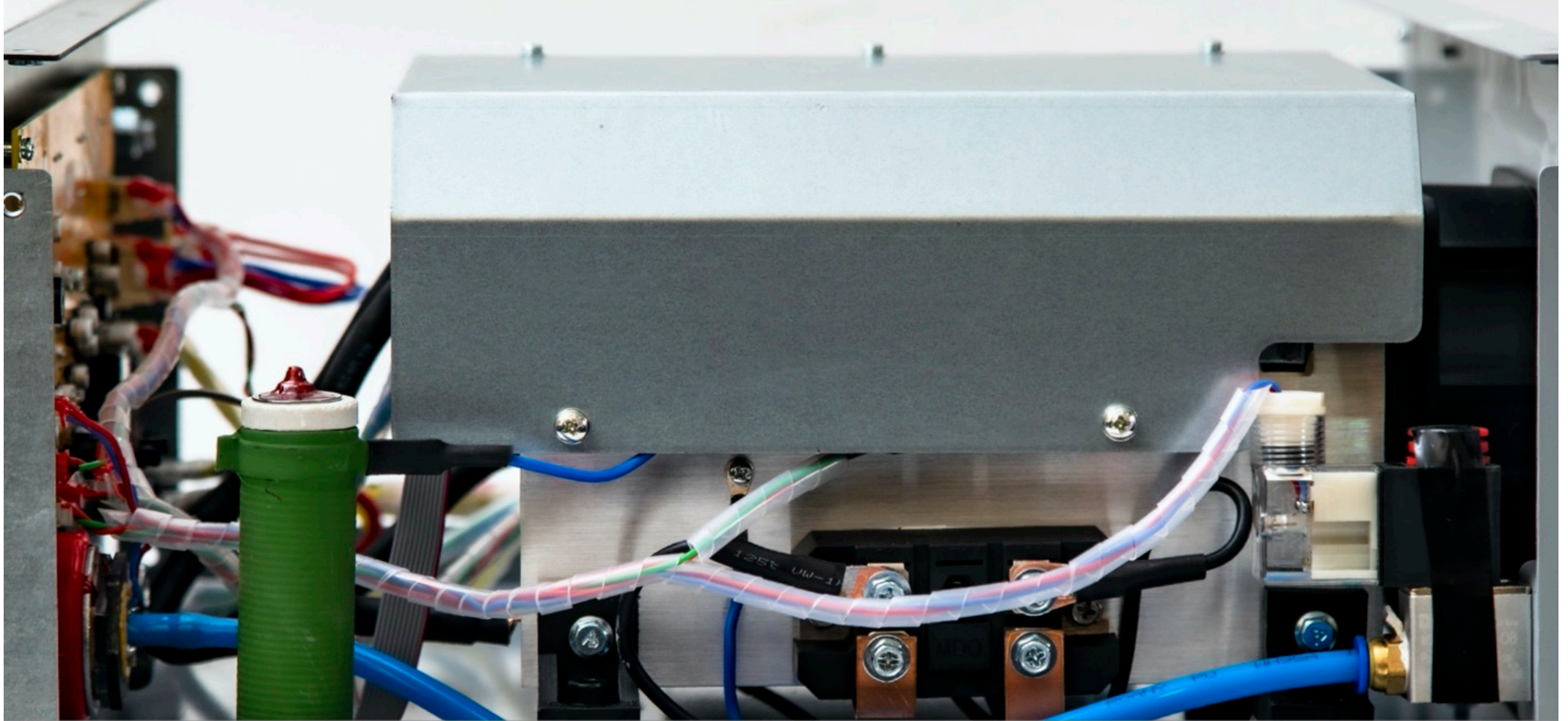


**BIGGER
POWER
MORE
POSSIBILITY**

Power supply upgraded to 2400W, compare to old 1200W power the welding speed has improved a lot. Now you can weld even bigger holes with faster welding speed.

Bigger power supply also makes the machine more stable, longer time continuous welding without power drop.

New AWE-16A equipped with anti-interference components, which can effectively resist the voltage fluctuations generated when the surrounding large equipment start or stop.



**DUSTPROOF
SYSTEM
GIVE MORE
PROTECTION**

Many of our customers use AWE-16A in a production environment, where metal dust is generated and short circuits can easily be triggered.

Therefore, the new machine is equipped with a metal dust cover at the top of the main control board, which can effectively isolate the influence of metal dust.



THE NEW WELDING GUN SYSTEM

We listened to the feedback of our customers and continuously improve the performance of welding gun system.

New designed welding gun interface more easily to plug in, not easy to damage even if plugged in and out frequently.



THE NEW WELDING GUN SYSTEM

The new welding gun eliminated external copper brush, so heat generation is smaller and using life is longer.

The holding part of the welding gun is coated with Teflon, It can effectively block the heating from welding gun and makes it more comfortable to hold.

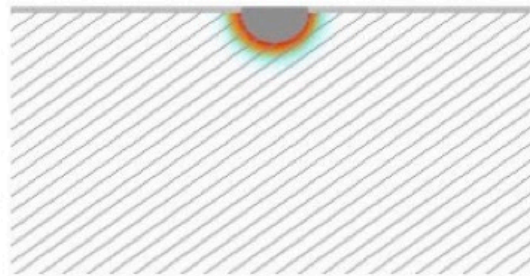


HIGH SPEED WELDING,
REPAIR HOLE SIZE FROM SEVERAL MICRONS TO MILLIMETERS,
HIGH COMBINATION STRENGTH,
NO ANNEALING AND NO DEFORMATION.

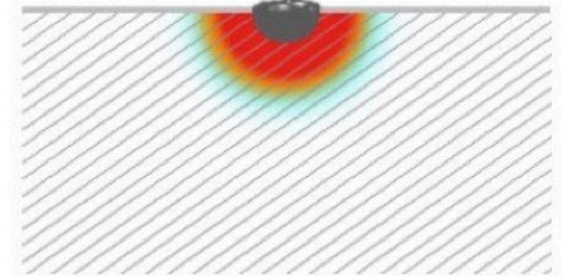
Very small heat affected zone, No change of micro structures

Weld with AWE-16A you can touch the welded surface immediately after welding. You will feel the surface is just warm not hot. Very small heat transferred into the casting compare to traditional welding method.

There will be no annealing for the castings and keep the mechanical structure unchanged.



ATOM AWE-16A



TRADITIONAL WELDING



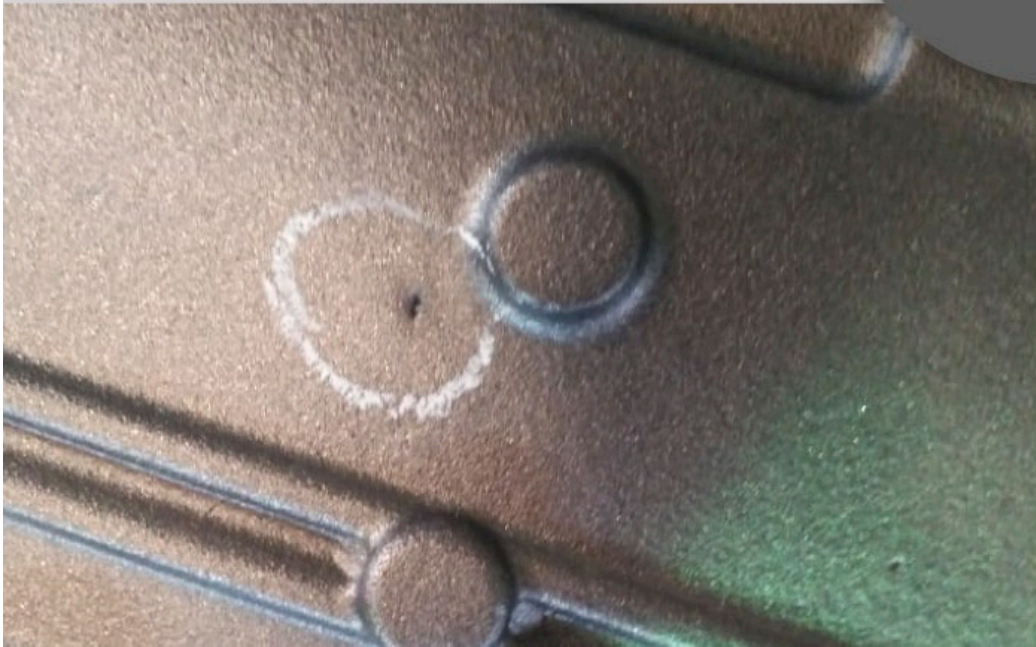
Steel castings

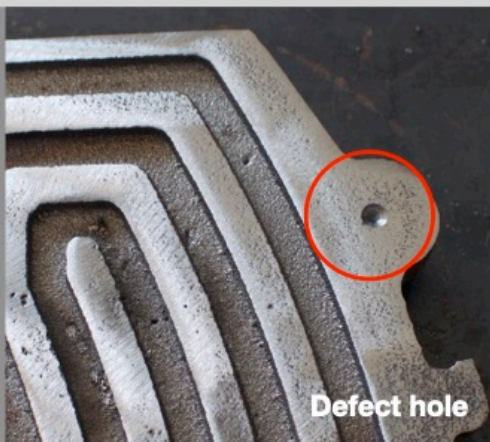
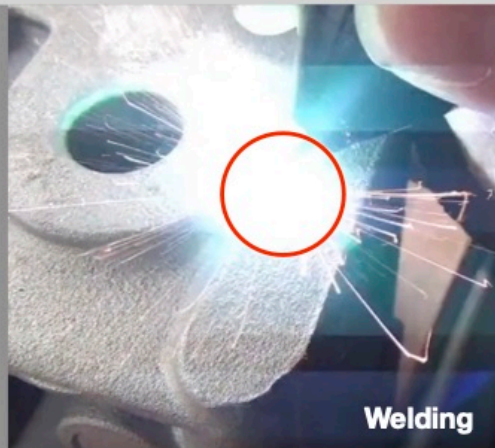
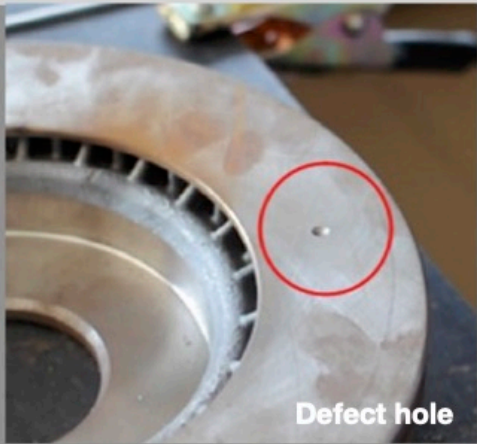
Copper / Brass castings

**SUITABLE
MATERIALS**

Ductile / Gray iron castings

Aluminum castings







TUNGSTEN COATING

AWE-16A can also be used for tungsten coating.

This process can increase several microns for the surface,

Which can be used for surface hardening or making the surface rough to increase friction.



MOULD REPAIR

AWE-16A is a good tool for mould repairing.

It can repair small damage/crack/scratch for mould to extend using life.

MANUFACTURE

Product quality is the foundation of company survival, so we adopt advanced production equipment and strict quality control.

Each machine will be tested for continuous high current operation for 48 hours before leaving the factory, so as to ensure the smooth operation of customers after long-term and high-intensity use.

In addition, each machine will be subject to 24-hour vibration test before packaging to ensure that parts will not fall off during transportation.



OUR MANUFACTURING EQUIPMENTS



To guarantee our cold welding machine stability, we adopt Japan imported lead-free reflow soldering automatic printing high-speed PCB mounter for PCB SMT processing, and the equipment can even be used for processing mobile phones and other circuit PCB boards.

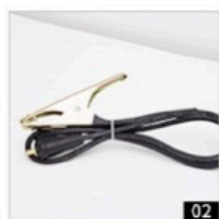


AWE-16A PARAMETERS

MODEL:	AWE-16A	INPUT VOLTAGE:	AC220V 50/60hz
POWER OUTPUT:	2400W	VOLTAGE RANGE:	20-100V
FREQUENCY:	50-500HZ	OUTPUT PERCENTAGE:	20-160%
NET WEIGHT:	23KGS	MACHINE SIZE:	405*210*450MM
ELECTRODE DIA.:	Φ1.0-3.2MM	COOLING:	AIR



01



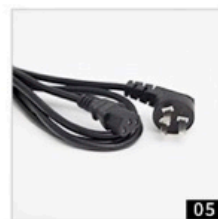
02



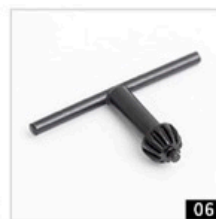
03



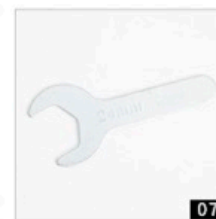
04



05



06



07



08



QINGDAO ATOM WELDING EQUIPMENTS CO.,LTD.

Address: No.16, Liaoyang East Road, Qingdao, China.

Email: info@atomwelding.com **WeChat:** ATOM-WELDING

Tel: 0086-18661811965

www.atomwelding.com | www.welding-machine.cn